



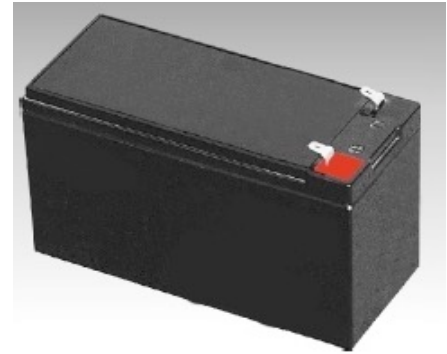
VRLA Battery

**NP 7.0-12**

**12V7.0AH**

**VRLA Battery**

- completely sealed and maintenance-free, low self-discharge
- 100% precise quality testing, stable quality and high reliable performance
- Unique grid alloy formula and updated manufacturing technique
- Floating & standby use: up to 5 years
- Cycle use 1: More than 300 cycles at 80% DOD
- Cycle use 2: More than 1200 cycles at 30% DOD

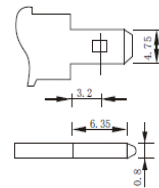
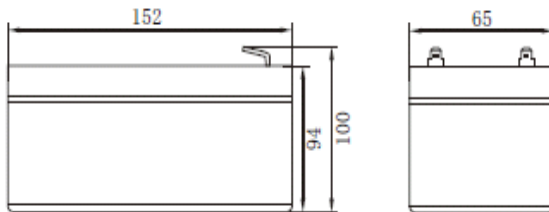


**Application:**

- Telecommunications
- UPS/EPS
- DC Power Supply
- Solar system
- Wind Power System
- Auto Control System

**Construction:**

- Component .....Raw material
- Positive .....Lead dioxide
- Negative .....Lead
- Container .....ABS
- Cover .....ABS
- Sealant .....Epoxy
- Safety valve ....Rubber
- Terminal .....Copper
- Separator .....Fiber glass
- Electrolyte .....Sulfuric acid

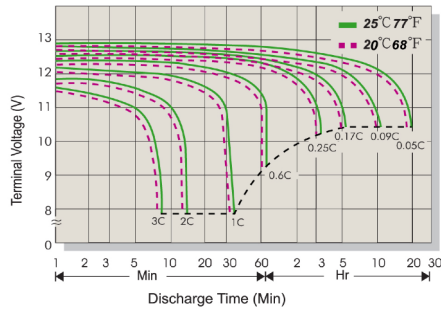


**Specification:**

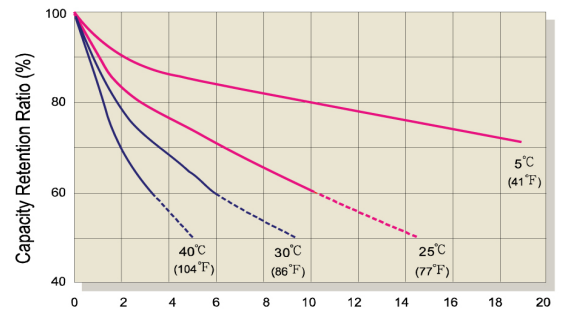
Battery Model	NP 7.0-12 12V7.0AH			
Designer Floating Life	Up to 5 Years			
Capacity (25°C)	20HR(0.36A,10.50V)	10HR(0.7A,10.50V)	5HR(1.19A,10.5V)	1HR(3.85A,10.5V)
	7.2AH	7AH	5.95AH	3.85AH
Dimensions	Length	Width	Height	Total Height
	152mm (5.99inch)	65mm (2.56inch)	94mm (3.7inch)	100mm (3.94inch)
Approx. Weight	2.0Kg			
Internal Resistance	Full charged at 25°C: ≤25mΩ			
Self Discharge	2% of capacity declined per month at (25°C)			
Capacity Affected by Temp.(20HR)	40°C	25°C	0°C	-15°C
	102%	100%	88%	78%
Charge Voltage(25oC)	Cycle use		Float use	
	14.4-14.6V(-30mV/°C), max. Current: 2.1A		13.6-13.8V (-20mV/°C)	



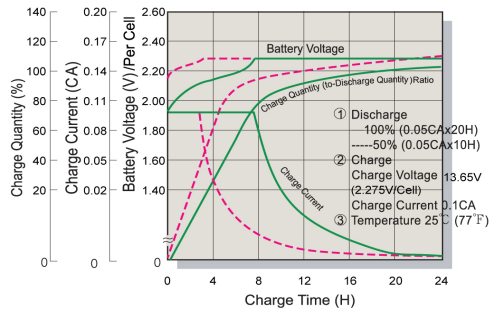
Terminal Voltage (V) and Discharge Time



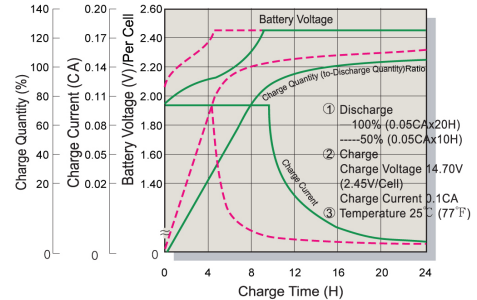
Capacity Retention Characteristic



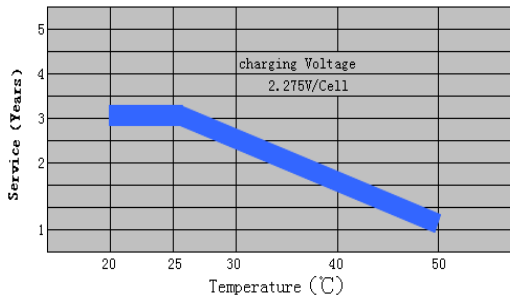
Battery Voltage and Charge Time for Standby Use



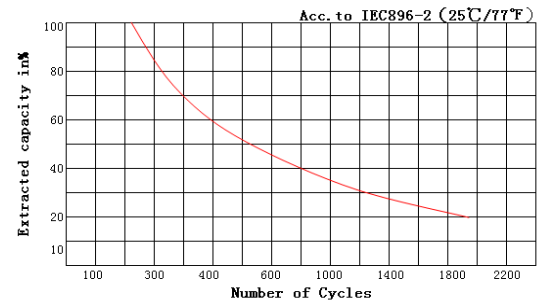
Battery Voltage and Charge Time for Cycle Use



Tickle(or Float) Service Life



Cycle Service Life



Constant Current Discharge(CC,Unit:A) at 25°C(77°F)

F.V/Time	5Min	10Min	15Min	30Min	1Hr	2Hr	3Hr	4Hr	5Hr	8Hr	10Hr	20Hr
9.6V	25.2	16.5	12.3	8.05	4.20	2.45	1.80	1.45	1.23	0.81	0.66	0.36
10.2V	23.1	15.8	11.3	7.64	3.94	2.35	1.75	1.40	1.20	0.80	0.65	0.35
10.5V	21.0	14.8	10.5	7.41	3.82	2.30	1.72	1.33	1.19	0.79	0.64	0.35
10.8V	20.2	14.1	9.80	7.20	3.69	2.25	1.69	1.31	1.14	0.77	0.63	0.34
11.1V	18.7	13.3	9.10	7.00	3.56	2.19	1.60	1.28	1.09	0.75	0.61	0.33

Constant Power Discharge (CP,Unit:W) at 25°C(77°F)

F.V/Time	5Min	10Min	15Min	30Min	1Hr	2Hr	3Hr	4Hr	5Hr	8Hr	10Hr	20Hr
9.6V	262	177	131	86.6	45.4	27.1	20.3	16.3	14.2	9.32	7.65	4.21
10.2V	248	175	126	85.6	44.6	26.9	20.1	16.1	14.1	9.29	7.64	4.14
10.5V	231	168	120	85.3	44.2	26.7	20.1	15.6	14.0	9.26	7.62	4.13
10.8V	227	163	113	83.5	42.9	26.3	19.9	15.4	13.4	9.09	7.45	4.06
11.1V	212	154	106	81.9	41.8	25.9	19.1	15.3	13.0	8.94	7.39	4.03